

Crossroads at Union Village

Public Workshop



- | | | |
|----|------------------------|------|
| 1. | Welcome & Introduction | 5:35 |
| 2. | Project Background | 5:45 |
| 3. | Focus Groups | 6:00 |
| 4. | Review/Presentations | 7:30 |
| 5. | Adjournment | 8:00 |

Date: August 8th, 2016



Gateway Plan - West

“Warren County’s western gateway integrates a pleasant mix of vibrant business districts, quality industrial areas, comfortable/safe neighborhoods, and natural open spaces that form regional destinations and strong communities.”



● Norton Commons (Louisville, KY)

A carefully designed, mixed-use community that epitomizes “New Urbanism,” Norton Commons contains a variety of housing types and compatible neighborhood businesses, collectively forming a strong, vibrant community that is walkable and unique.

Community branding, white picket fences, unified architecture, and open space all contribute to New Albany’s upscale image. New Albany has also been successful in attracting corporate offices and high-paying jobs.



● Carmel, IN

Located at the edge of the Indianapolis metropolitan area, the City of Carmel has focused heavily on the built environment. Cultural icons, landmarks, and “New Urbanism” make Carmel a desirable place to live and work.

As a prestigious estates community, Indian Hills is known for being a quiet oasis on the outskirts of Cincinnati.

● New Albany, OH



● Indian Hills, OH



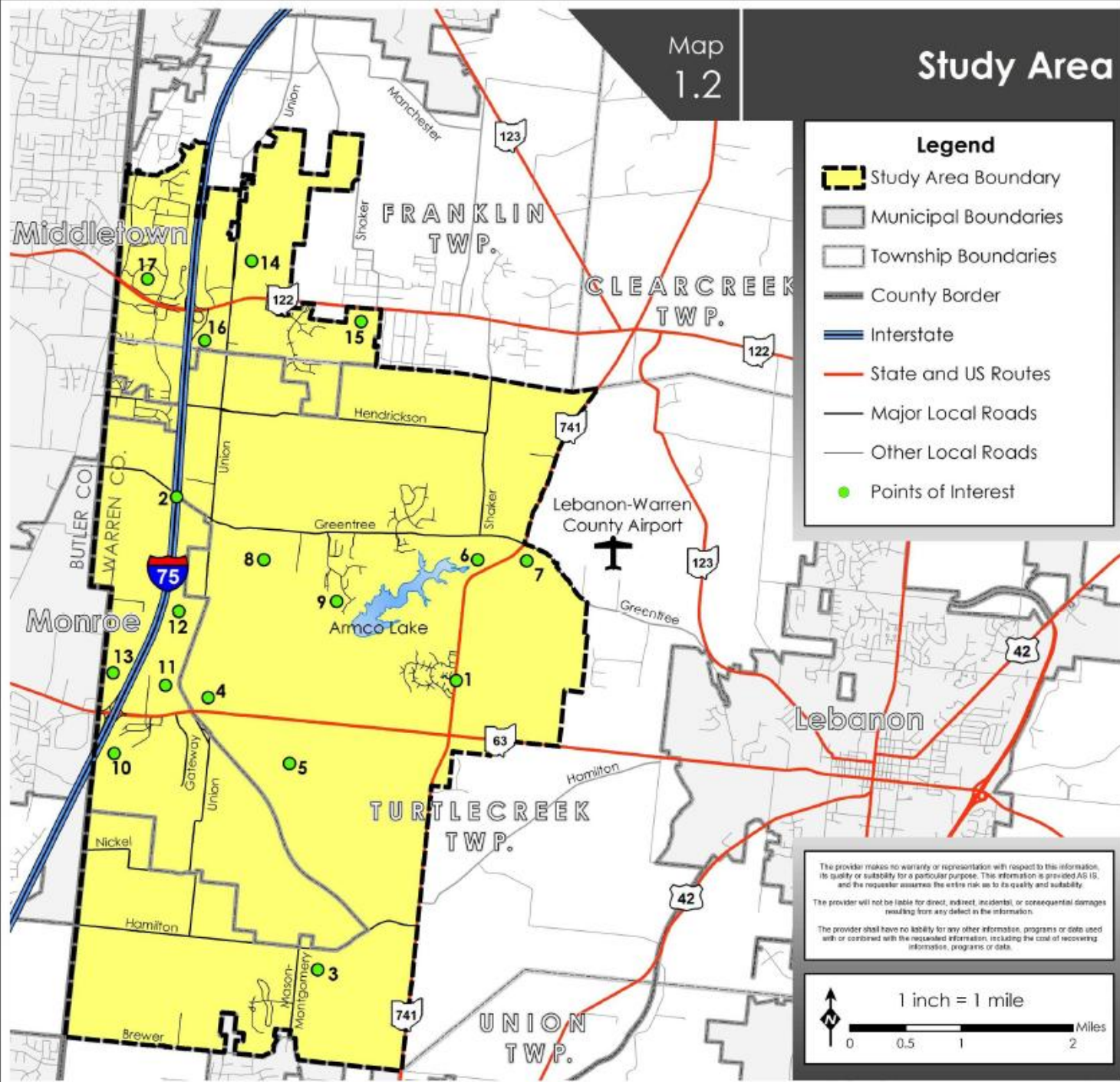
● Lexington, KY:

Lexington has preserved open space, agriculture, and its equestrian roots, making it the “Horse Capital of the World.” The City has a strong urban core as well as a clearly defined urban service boundary.

● The Research Triangle, NC

Research, technology, and quality business/industrial parks are defining characteristics of the “Research Triangle” in North Carolina. Located in proximity to the Cities of Raleigh, Durham, and Chapel Hill, the region is anchored by three major universities: Duke, North Carolina, and North Carolina State.





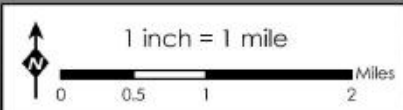
Legend

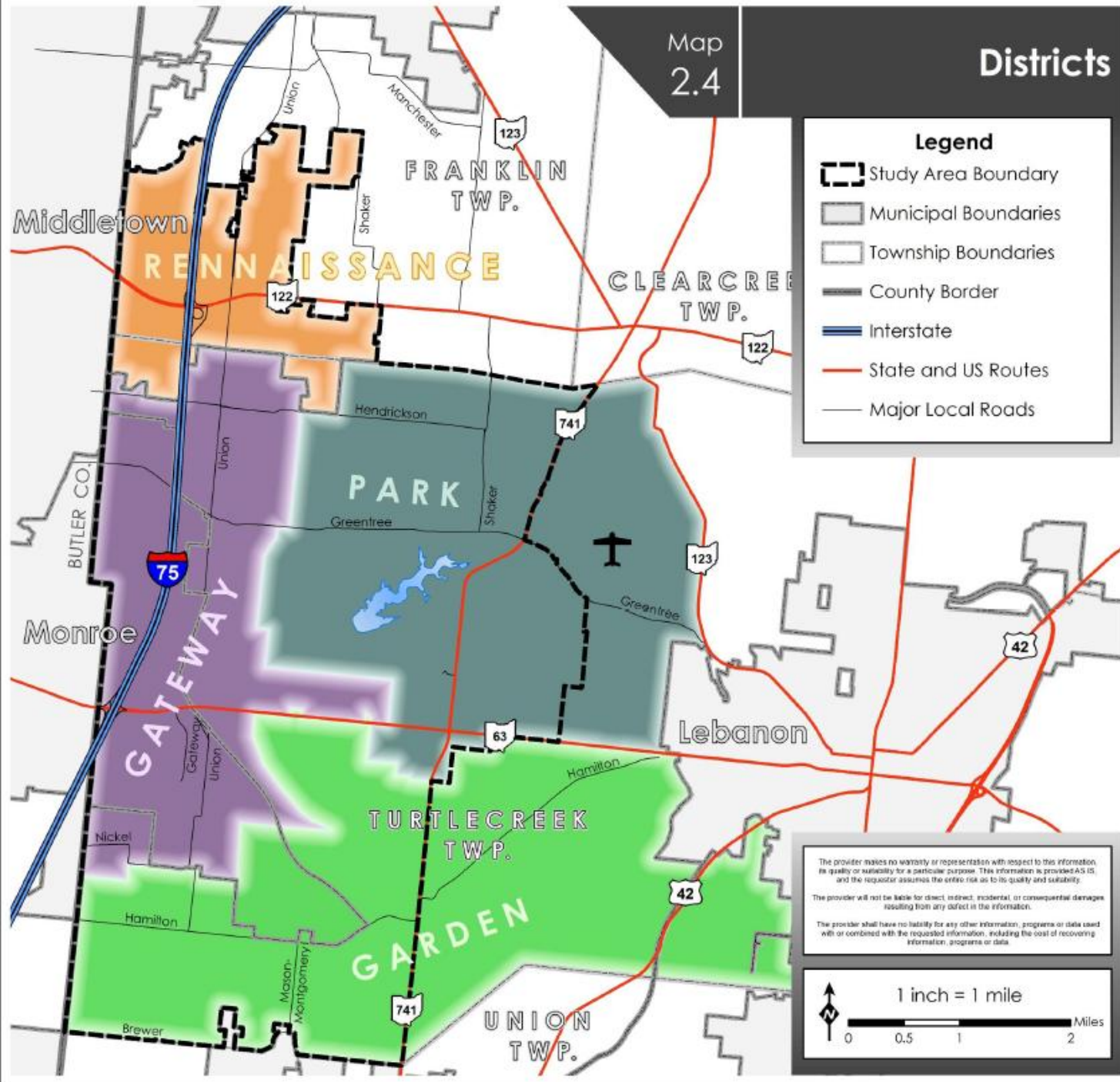
- Study Area Boundary
- Municipal Boundaries
- Township Boundaries
- County Border
- Interstate
- State and US Routes
- Major Local Roads
- Other Local Roads
- Points of Interest

The provider makes no warranty or representation with respect to this information, its quality or suitability for a particular purpose. This information is provided AS IS, and the requester assumes the entire risk as to its quality and suitability.

The provider will not be liable for direct, indirect, incidental, or consequential damages resulting from any defect in the information.

The provider shall have no liability for any other information, programs or data used with or combined with the requested information, including the cost of recovering information, programs or data.





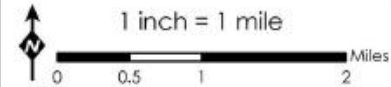
Legend

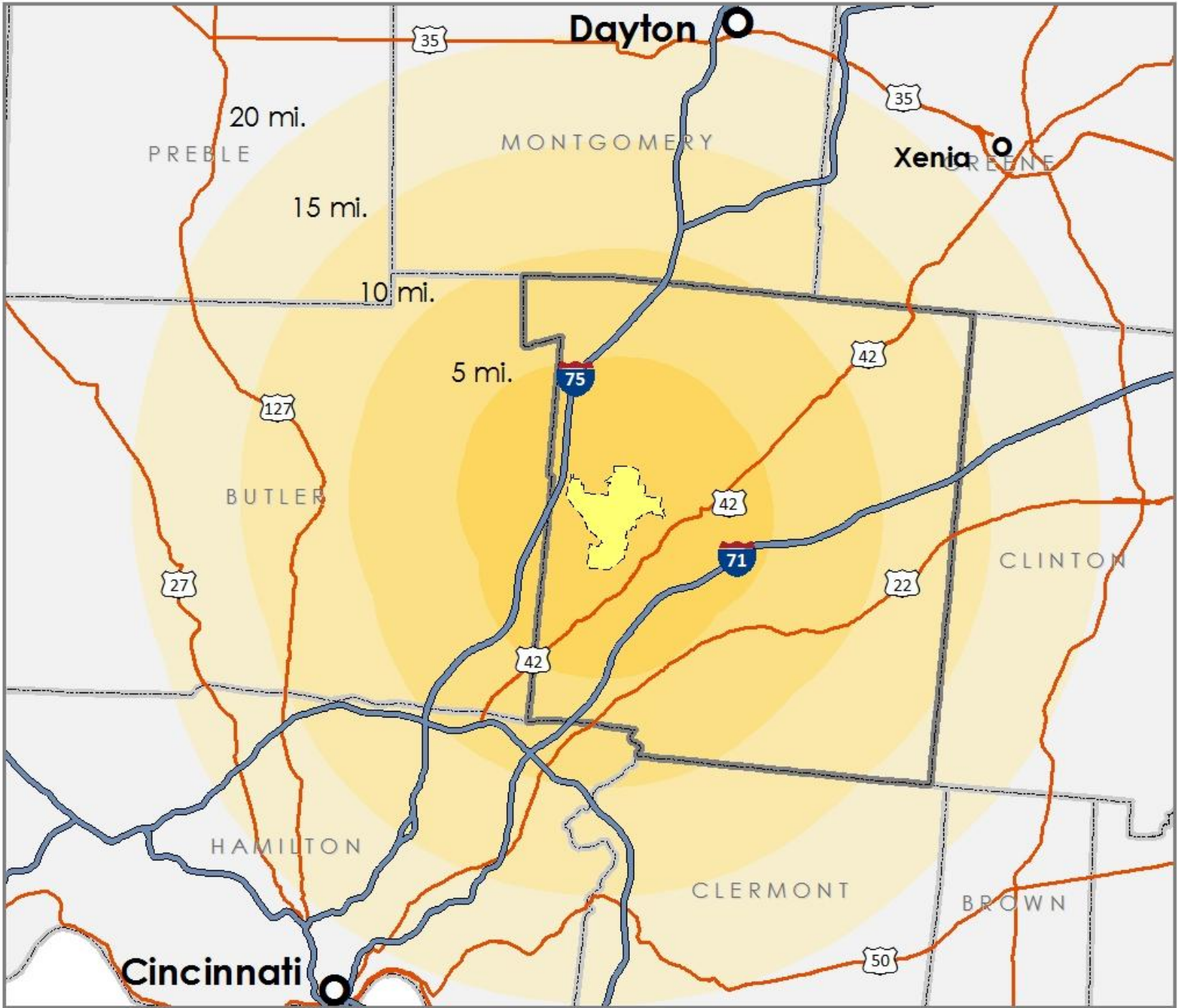
- Study Area Boundary
- Municipal Boundaries
- Township Boundaries
- County Border
- Interstate
- State and US Routes
- Major Local Roads

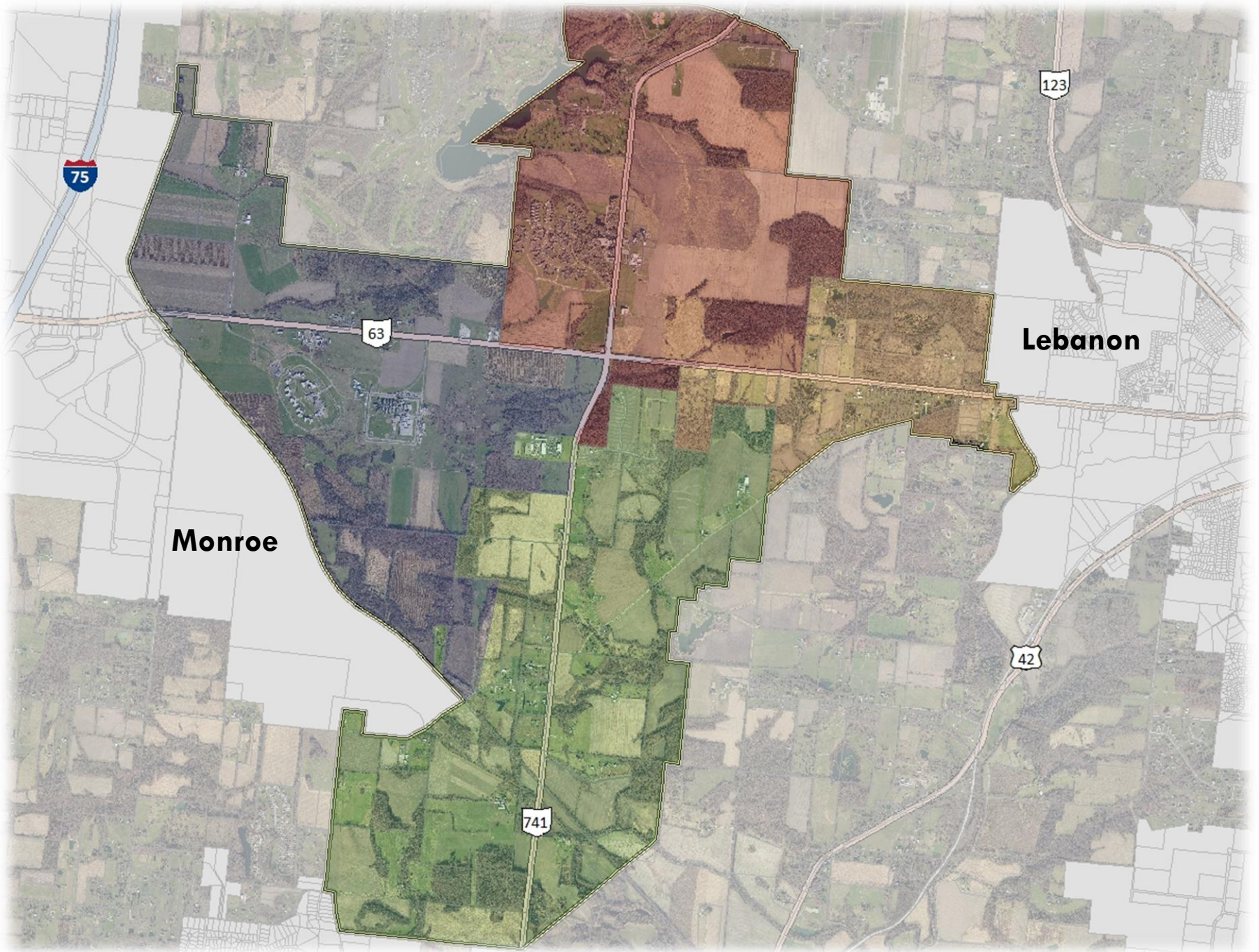
The provider makes no warranty or representation with respect to this information, its quality or suitability for a particular purpose. This information is provided AS IS, and the requestor assumes the entire risk as to its quality and suitability.

The provider will not be liable for direct, indirect, incidental, or consequential damages resulting from any defect in the information.

The provider shall have no liability for any other information, programs or data used with or combined with the requested information, including the cost of recovering information, programs or data.







75

123

63

Lebanon

Monroe

741

42

Citizens Advisory Committee

May

Jun

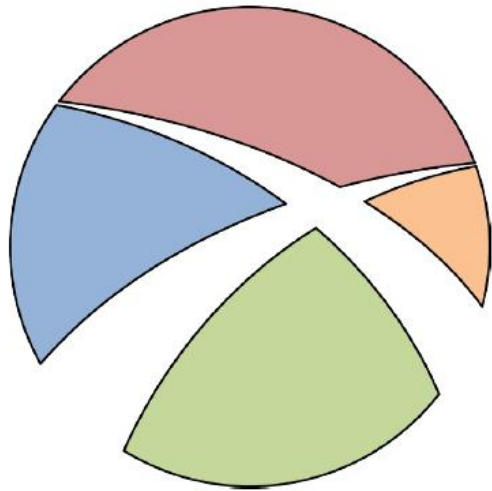
Jul

Aug

Sep



Visual Preference Survey

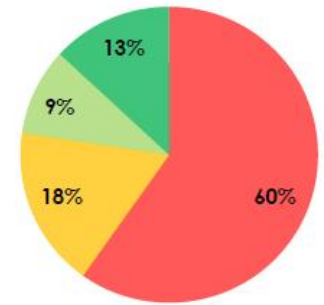
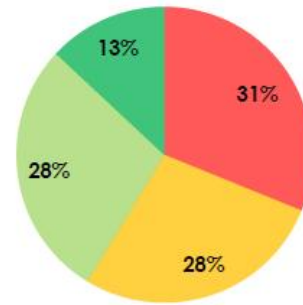
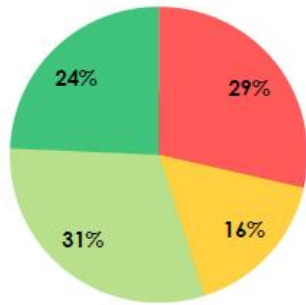
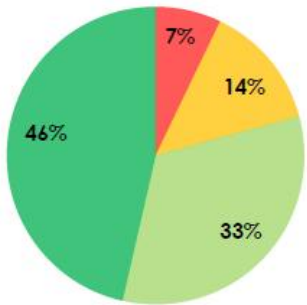


VISUAL PREFERENCE
REPORT

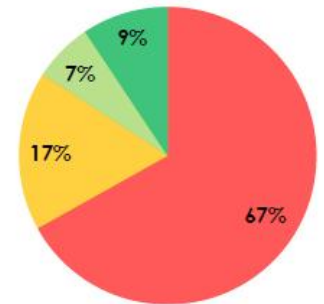
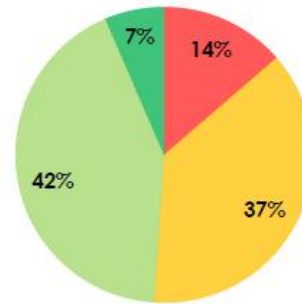
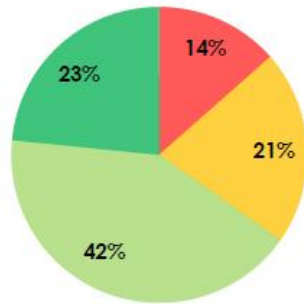
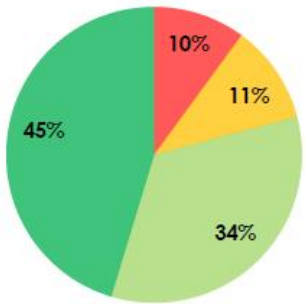


W C R P C

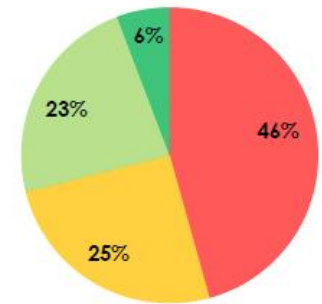
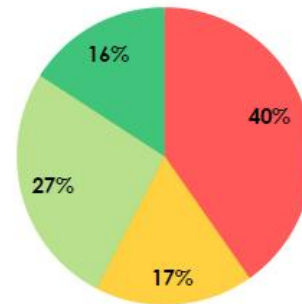
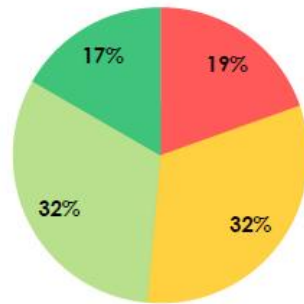
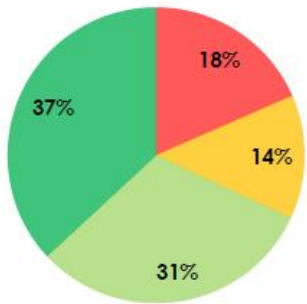
Streetscape



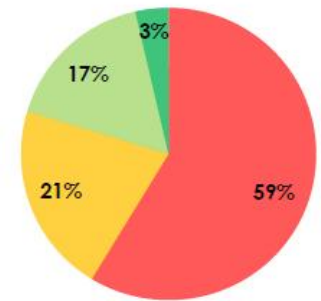
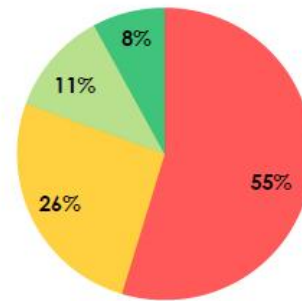
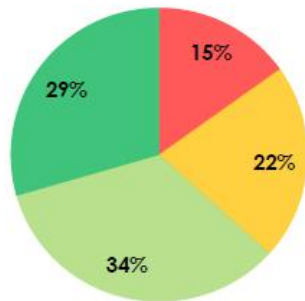
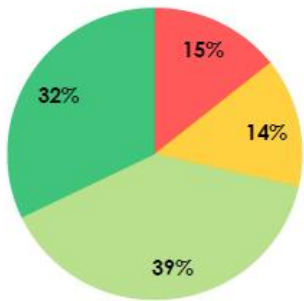
Single Family



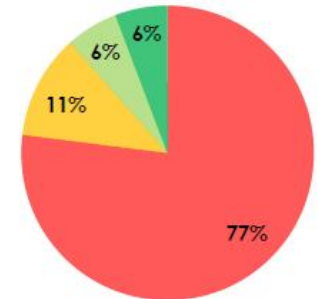
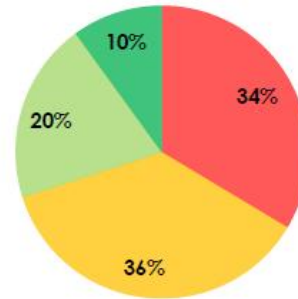
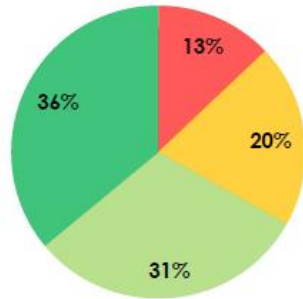
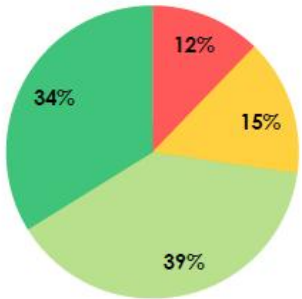
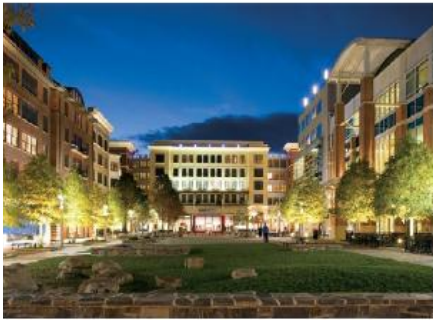
Multi-Family



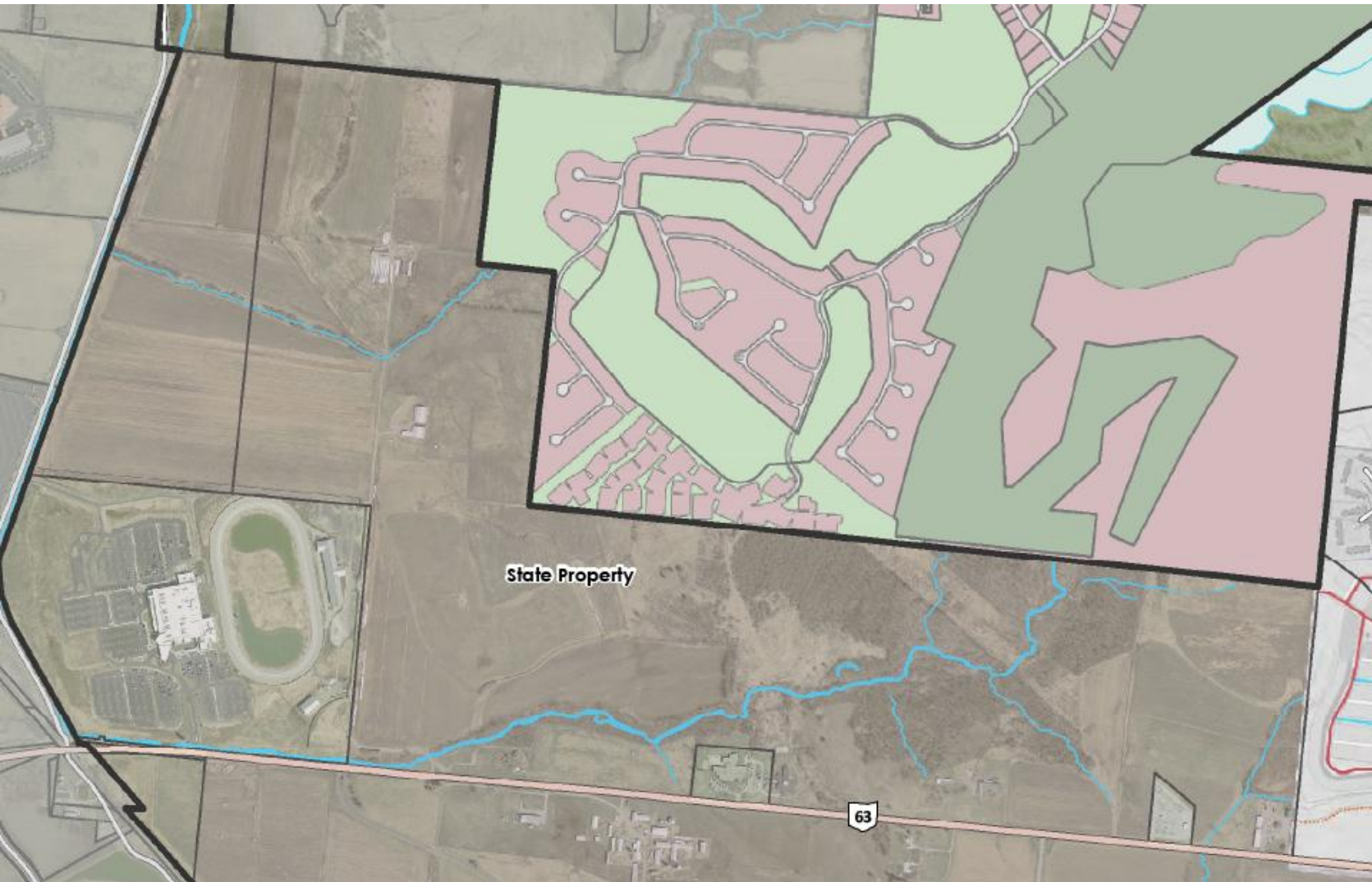
Office Buildings



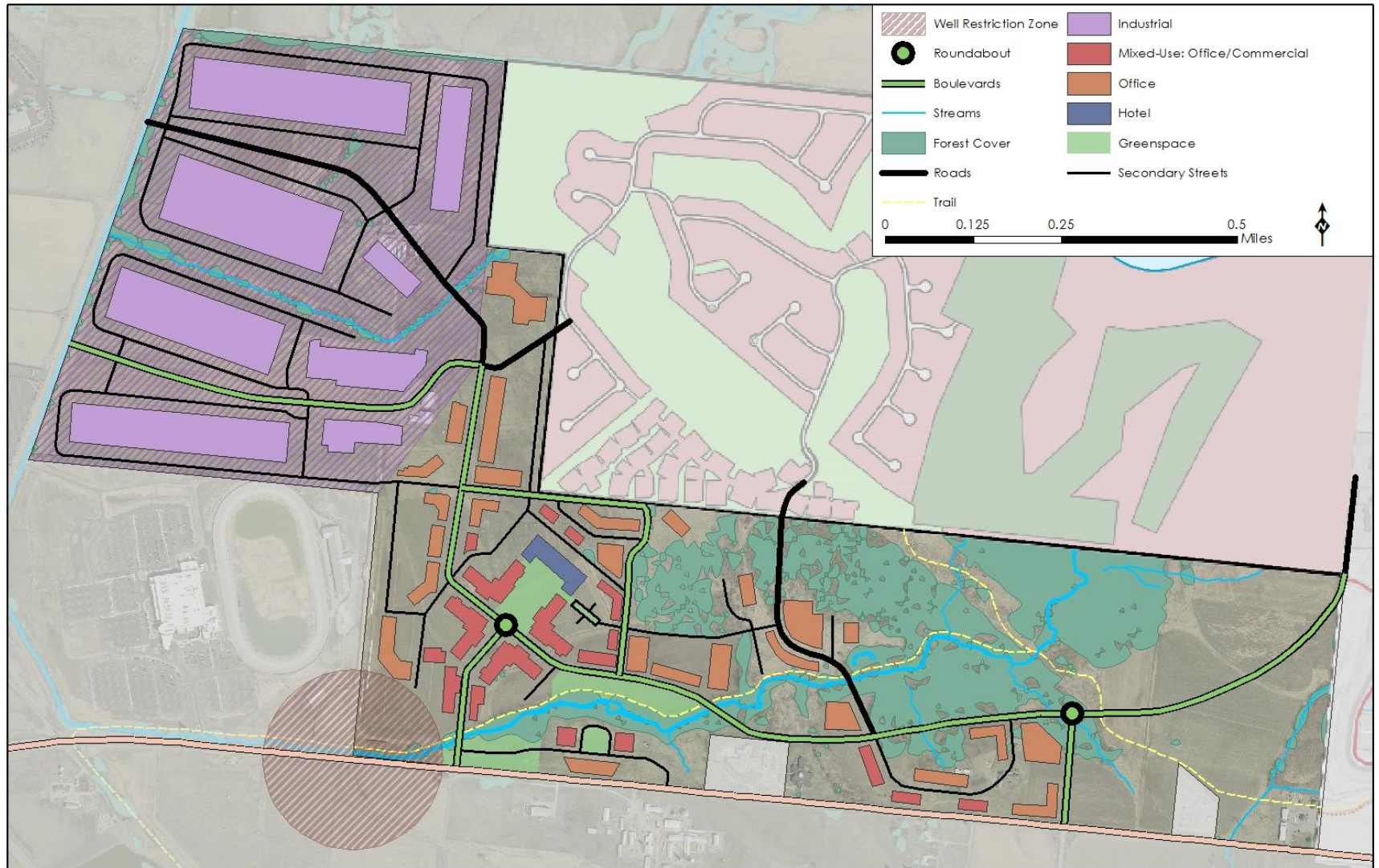
Commercial Districts



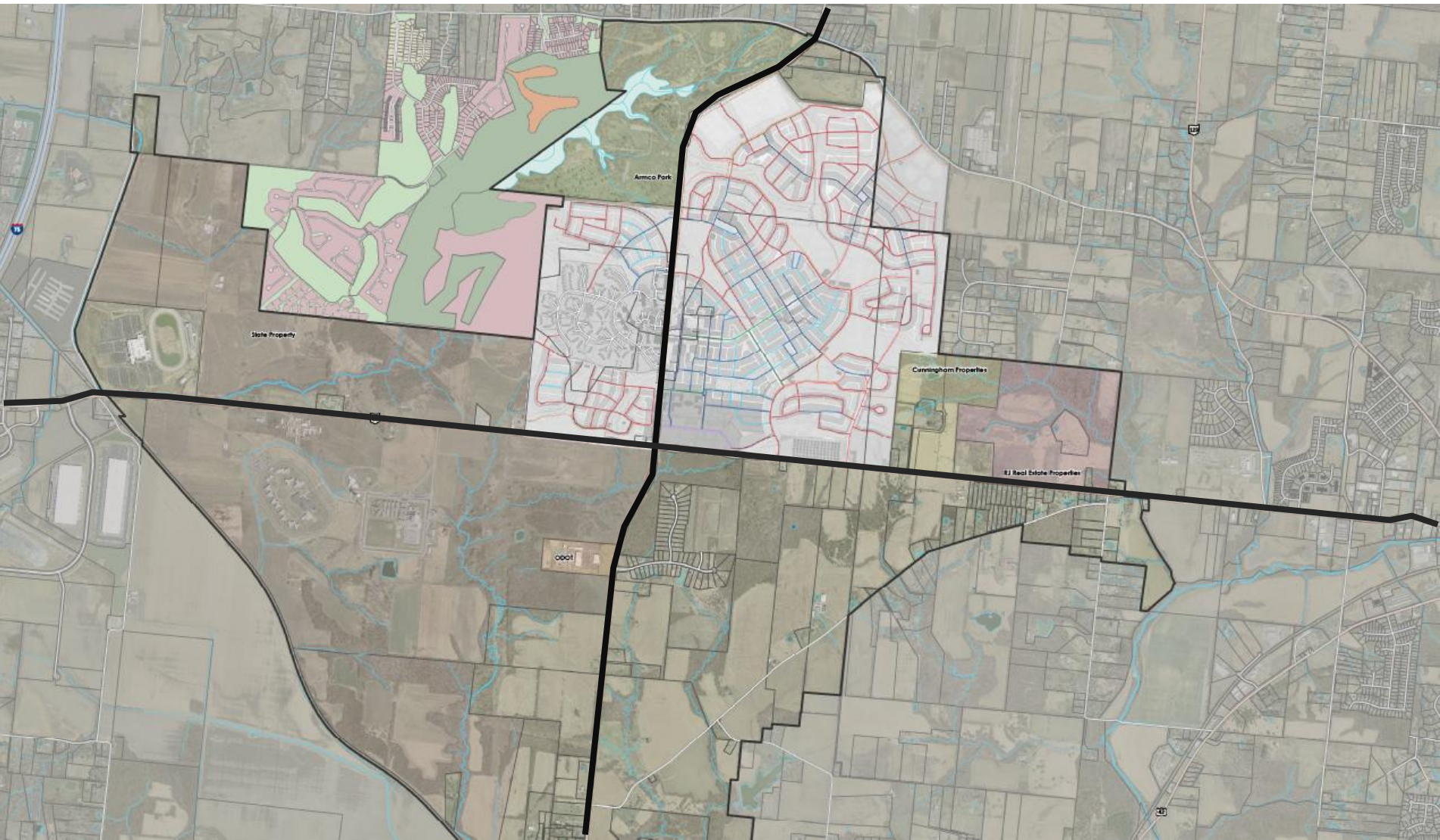
The State Property



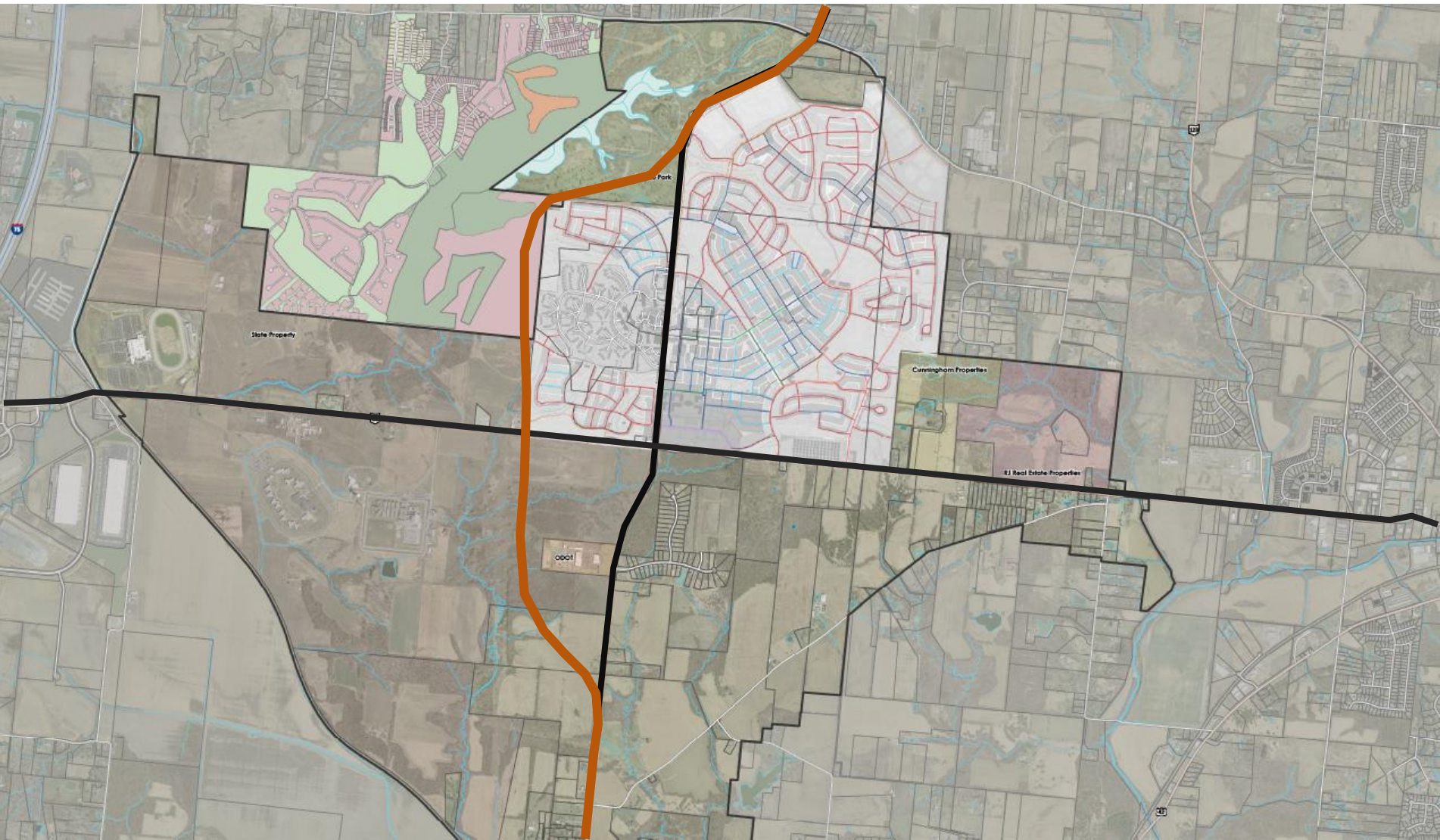
The State Property



SR 63 and 741

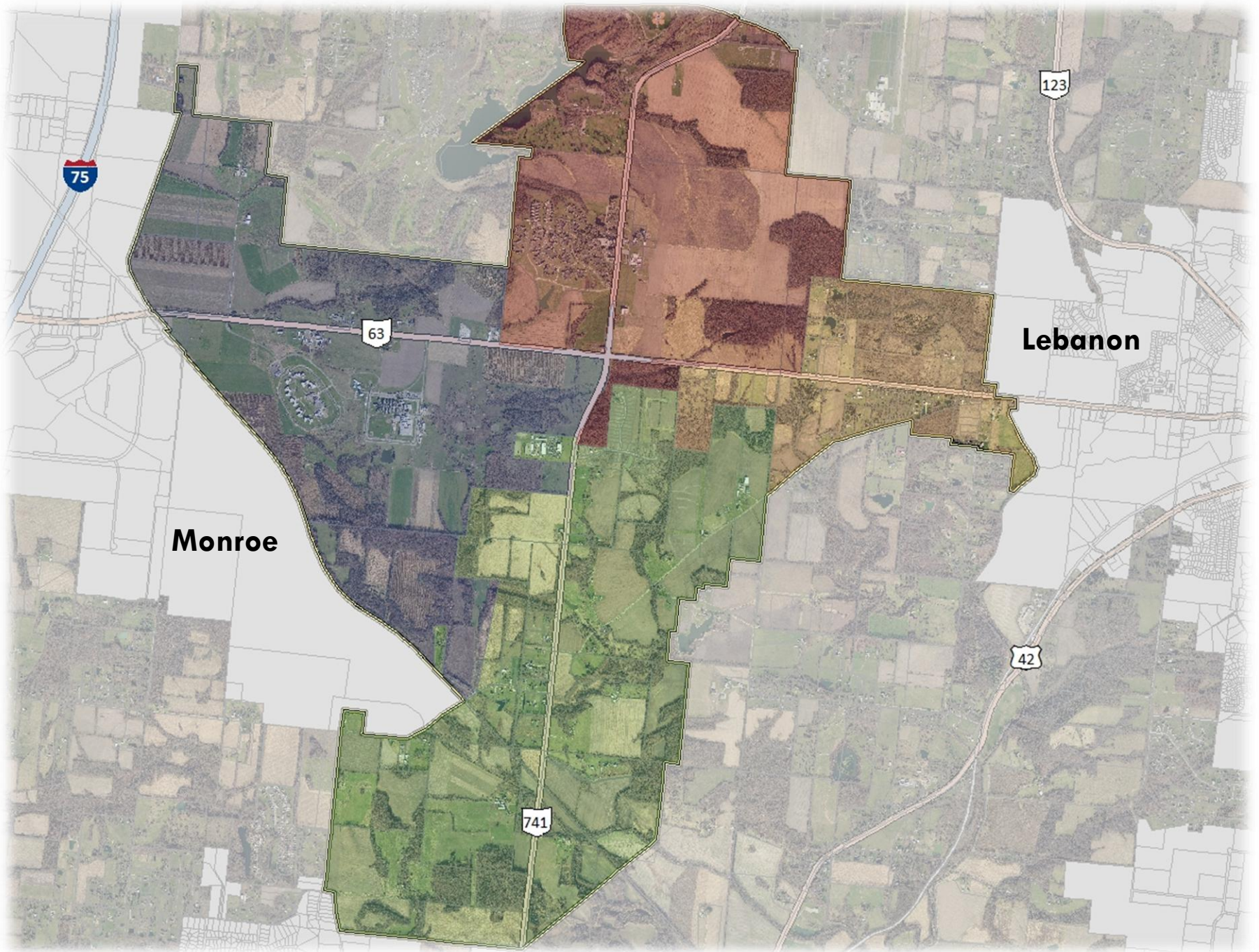


SR 741 Reroute



Workshop Groups

SWOT	Lebanon Gateway	Garden District	Roadways
318	128 B	128 B	128 A
Share & identify the strengths, weaknesses, opportunities, and threats for the Crossroads study area.	Participate in a charrette focused on the eastern side of the study area adjacent to the City of Lebanon.	Partake in a charrette focused on the southern side of the study area adjacent to the City of Mason.	Engage in a discussion and charrette on all roadways in the study area, with a focus on State Routes 63 and 741.



75

123

63

42

741

Monroe

Lebanon

Things to Think About

Roadway Design

- Streetscape
- Reroute(s)
- Widening

Land-Use Concepts

- Activity Nodes
- Transitions

Gateways

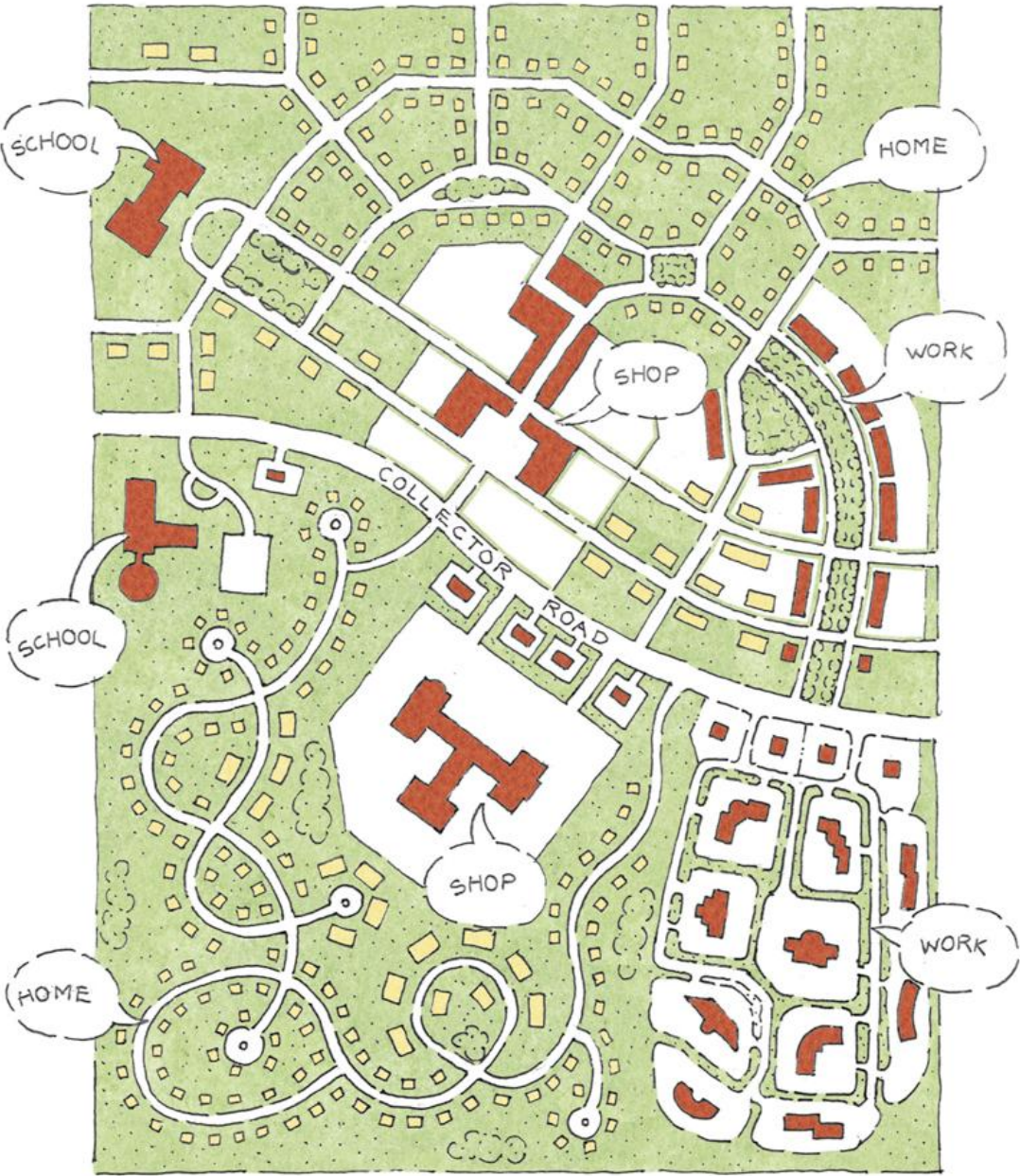
- Landscaping
- Signage

Pedestrian Circulation

Utilities

- Sewers
- Easements

TRADITIONAL NEIGHBORHOOD



SUBURBAN SPRAWL

Think Like a Planner